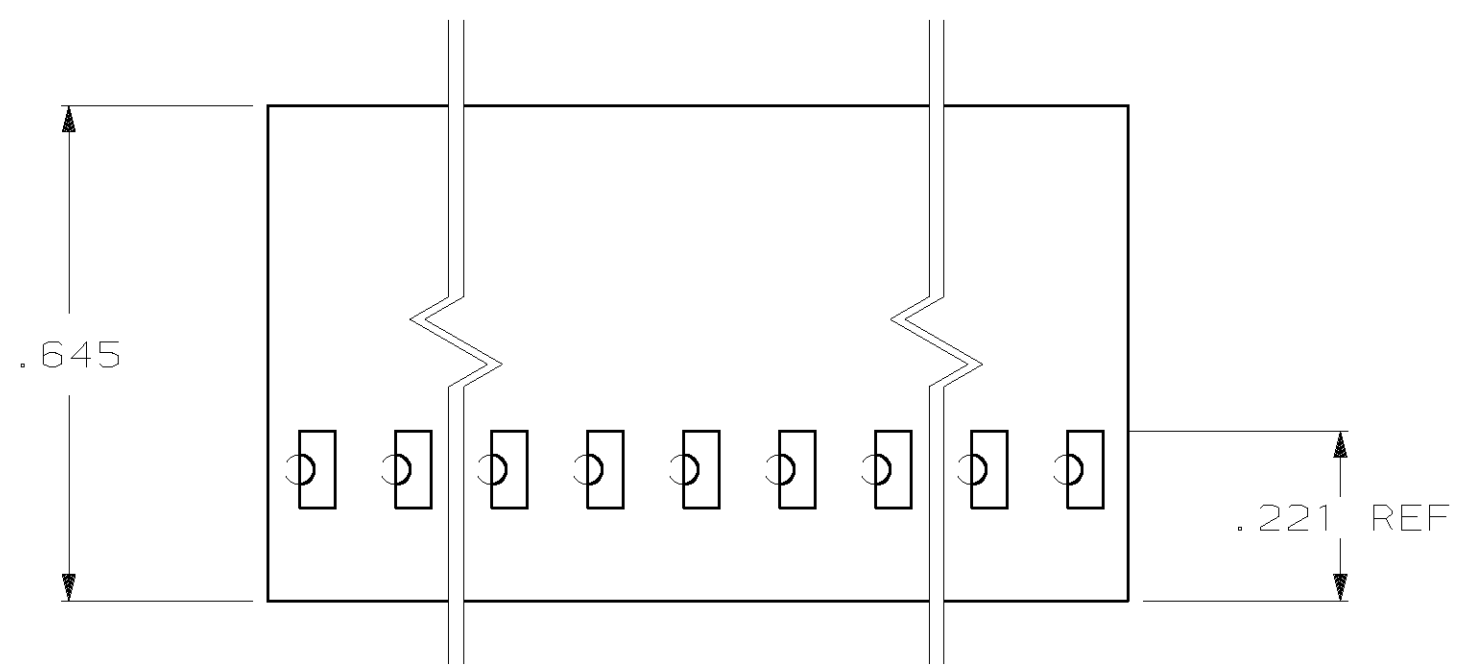
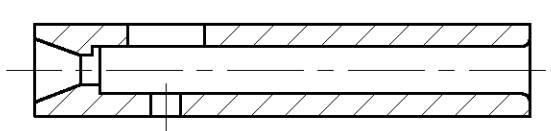
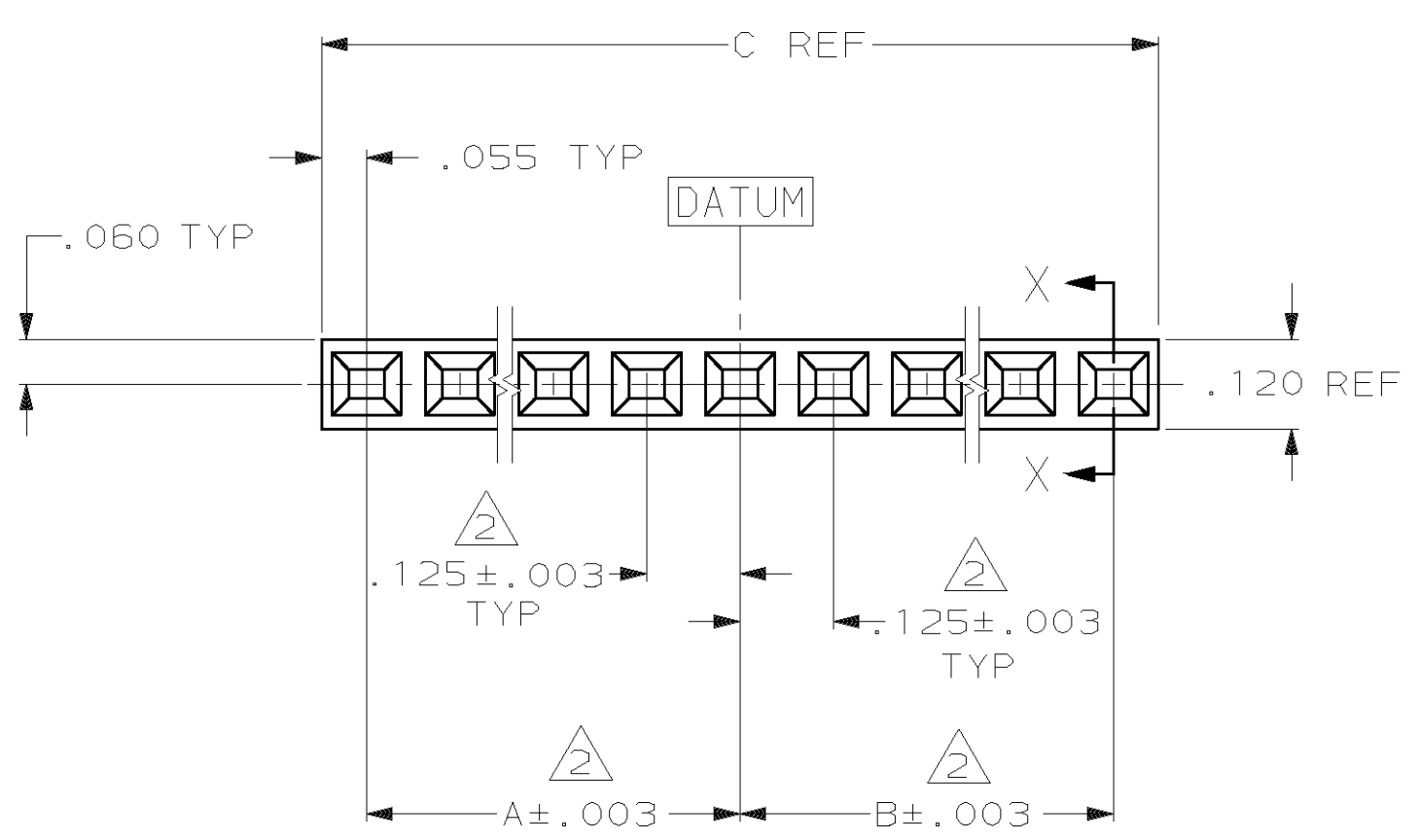


THIS DRAWING IS UNPUBLISHED. RELEASED FOR PUBLICATION
 © COPYRIGHT 19 BY AMP INCORPORATED. ALL INTERNATIONAL RIGHTS RESERVED.

MOD	LOC	DIST	P	F	ZONE	LTR	DESCRIPTION	DATE	APPD
30	AD	39				K	REV PER 063C-0200-04	JR/DS	14OCT04



- ① GLASS FILLED NYLON, COLOR-BLACK PER ASTM D4066
- ② CAVITY LOCATION DIMENSIONS INCREASE IN INCREMENTS OF .125 TOLERANCES NON-CUMULATIVE.
- ③ USE EXTRACTION TOOL 91052-2 TO REMOVE RECEPTACLE CONTACTS.



SECT X-X

	C	B	A	NO. OF POS	PART NUMBER
OBSOLETE	1.610	.750	.750	13	1-86401-7
OBSOLETE	1.360	.625	.625	11	1-86401-6
OBSOLETE	3.485	1.625	1.750	28	1-86401-5
	.735	.250	.375	6	1-86401-4
OBSOLETE	2.985	1.375	1.500	24	1-86401-3
OBSOLETE	2.235	1.000	1.125	18	1-86401-2
OBSOLETE	2.110	.875	1.125	17	1-86401-1
OBSOLETE	1.985	.875	1.000	16	1-86401-0
	.360	.125	.125	3	86401-9
	1.235	.500	.625	10	86401-8
OBSOLETE	1.735	.750	.875	14	86401-7
	.610	.250	.250	5	86401-6
	.235	.125	-	2	86401-5
	1.485	.625	.750	12	86401-4
OBSOLETE	.985	.375	.500	8	86401-3
OBSOLETE	.485	.125	.250	4	86401-2
	2.485	1.125	1.250	20	86401-1

DO NOT SCALE PRINT. UNLESS SPECIFIED DIMENSIONS IN INCHES TOLERANCES ON : 2 PLC DEC ± - 3 PLC DEC ± .005 ANGLES ± 0°30'		DR 9-14-89 B.BOLES BG		AMP INCORPORATED Harrisburg, Pa. 17105	
MATERIAL ①		CHK 10-23-89 J. GESFORD			
FINISH -		APPD 10-23-89 J. GESFORD		NAME CONNECTOR, CRIMP SNAP-IN, MOD IV, SINGLE ROW, .125 CL (NO MARKING)	
		APPD 10-23-89 FLINCHBAUGH		SIZE C	
		PRODUCT SPEC -		FSCM NO 00779	
		APPLICATION SPEC -		DRAWING NO 86401	
		WEIGHT -		SCALE 4:1	
				SHEET 1 OF 1	